

The background features a variety of stylized trees in shades of green. Some trees have solid green foliage, while others have patterns like vertical stripes, horizontal stripes, dots, or concentric circles. The tree trunks are dark brown and simple in design. A large, white, cloud-like shape with a scalloped edge is centered in the image, containing the text.

Magnificent
Tree
Program

TABLE OF CONTENTS

01

About Me

02

Urban Forestry

03

Program Background

04

Contributions

05

Skills & Takeaways

06

Future Goals



About me!

My name is Jillian Smith! I am a Junior at the University of Arizona studying Environmental Science with an emphasis in Leadership, Communication, and Sustainability. I am eager to connect the community with my passion for nature!





Urban Forestry

AZDFFM aims to maintain environmental, social, and economic benefits while mitigating risk and providing opportunity for community engagement and pride through urban & community forestry!



Background

- Managed by the Arizona Department of Forestry and Fire Management (DFFM)
- Recognizes and celebrates Arizona's largest and most historically or culturally significant trees
- Part of a broader effort to promote forest conservation, education, and public awareness
- Trees are nominated and measured based on criteria like height, trunk circumference, and crown spread
- Designated trees are listed in the state registry of "Magnificent Trees"
- Program helps highlight the ecological importance of trees in urban environments and forest ecosystems
- Encourages community involvement through public nominations and citizen science contributions

Contributions



Created 2025
Annual Report



Built a mapped inventory of
Heritage/Witness Trees



Provided Research to
Improve Champion Tree
Program



Maintained and
Updated Database



Skills & Takeaways



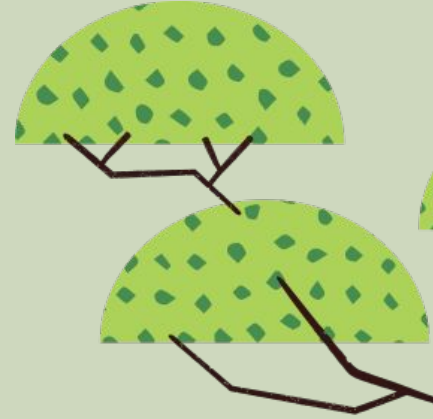
Data Management
and Organization



Working with community
collected data



Communicate Scientific
Information Clearly



Future Goals

Interested in continuing work in:

- Environmental data analysis
- Conservation-focused programs
- Community outreach & engagement

I plan to apply these skills to future academic and career opportunities!



THANK YOU!!

Check out the 2025
Annual Report!

